



A SCIENTIFIC BREAKTHROUGH.

INEXPENSIVE MASS HYDROGEN PRODUCTION FROM WATER

CLEAN H2 POWER GENERATION. NO FOSSIL FUEL



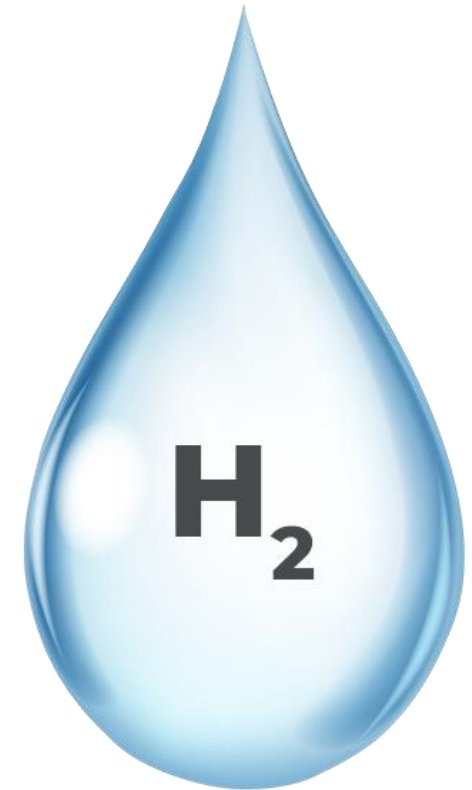


THERMOPLASMA, NOT ELECTROLYSIS!

4 STAGE PROCESS THAT INCLUDES THERMOPLASMA

W2H₂ – Water to Hydrogen Gas technology represents a major scientific breakthrough of the utmost importance.

This patented technology is based on an advanced proprietary scientific process which includes the invention of using Thermoplasma to convert water into Hydrogen Gas in high volume for power generation and at much lower cost than any other hydrogen production technology (ie Electrolysis).





REAL TIME H2 PRODUCTION

NO HYDROGEN STORAGE NEEDED

Since **H2** production is done in real time according to actual power production requirements there is **no requirement** for hydrogen storage, which is one of the greatest challenges in using hydrogen gas as a renewable fuel source, not to mention avoiding a storage model is also much safer.





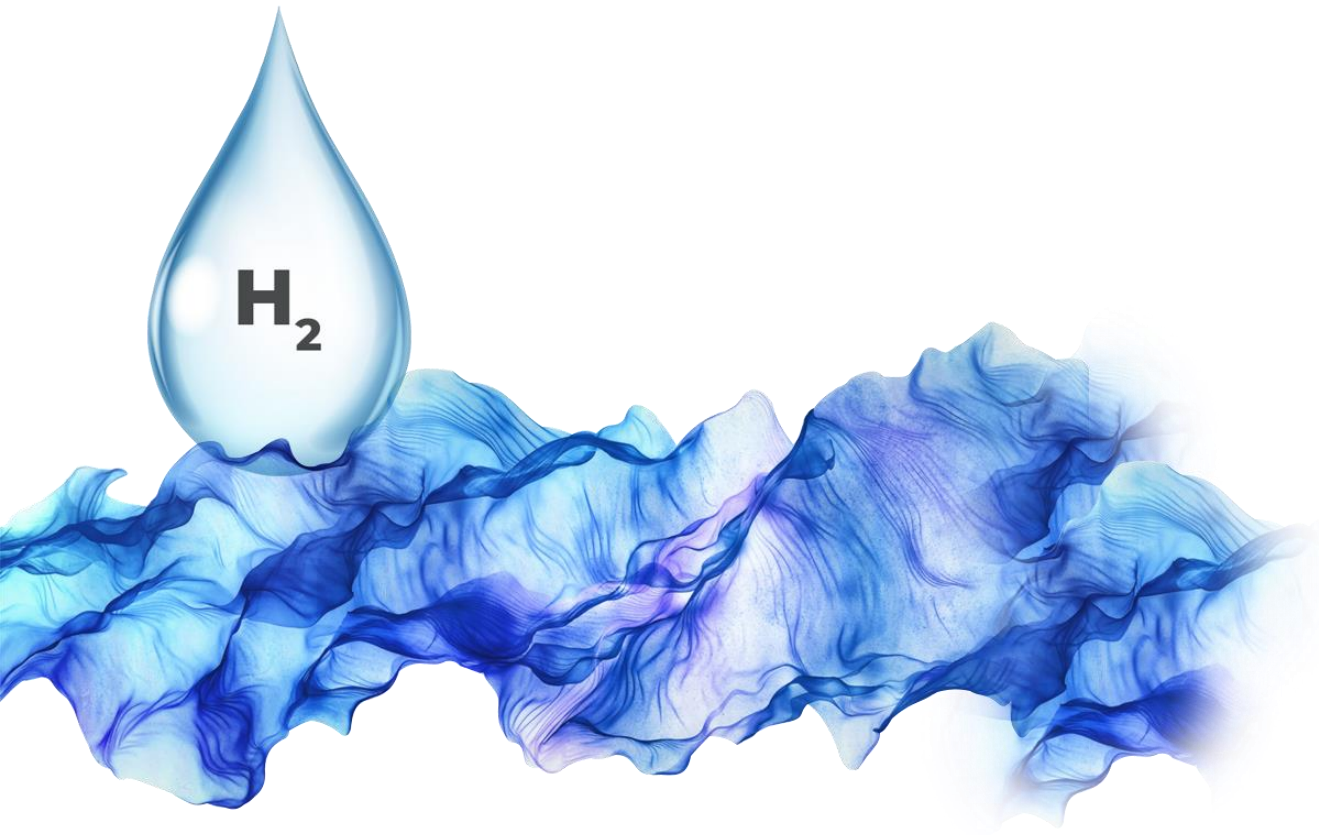
AVERAGE OF 75% SAVINGS!

NO FOSSIL FUEL IS NEEDED. RUNS 100% ON WATER!

On average with **W2H2**, power is generated at about 25% of the cost of fossil fuel and no fossil fuel component is required to mix with the H₂ when using **W2H2** technology. Water is the input!

In addition to eliminating the need to purchase any fossil fuel, adopters of **W2H2** also eliminate costs associated with fuel storage, shipping costs and/or gas pipeline infrastructure.

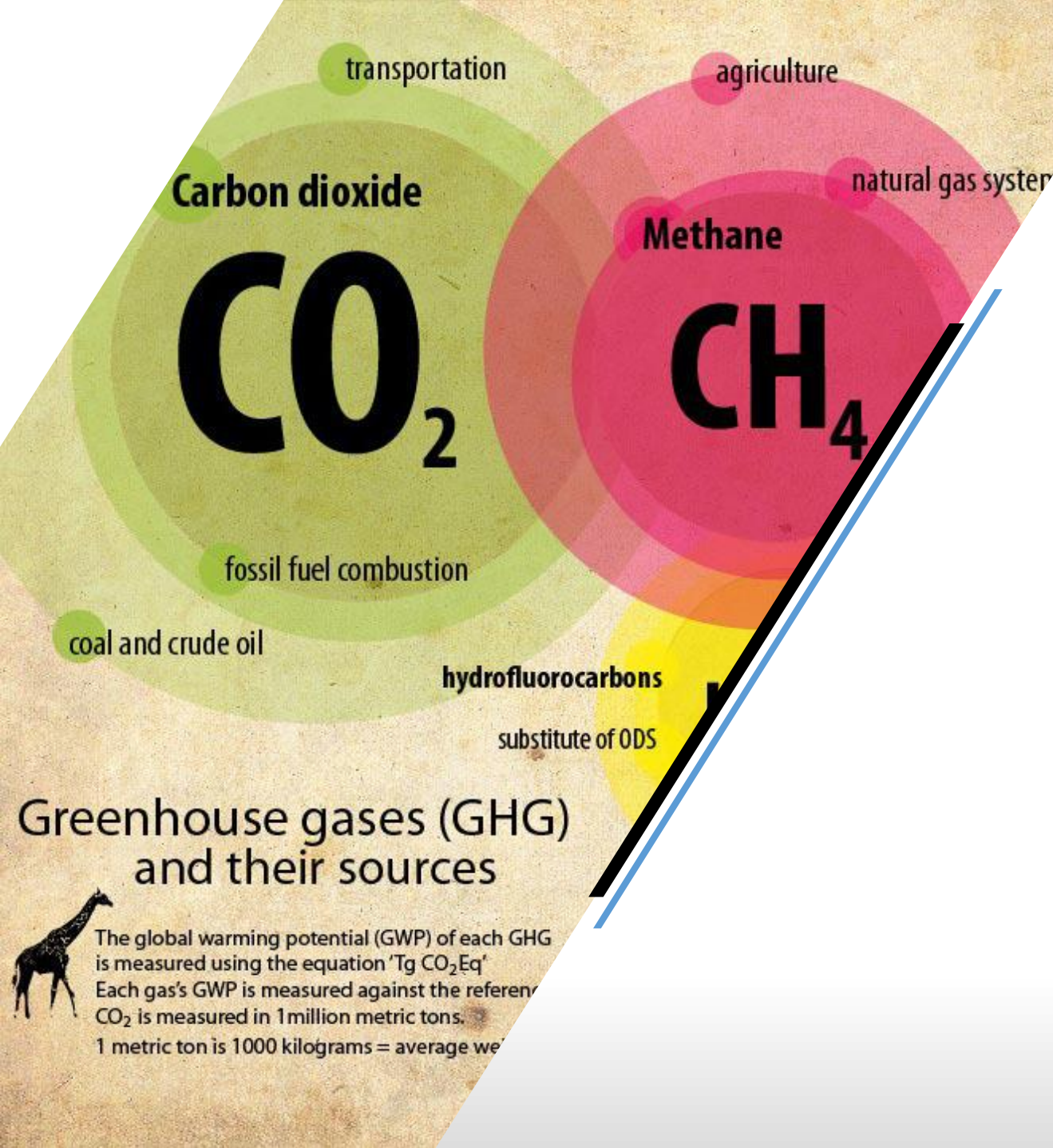




HIGH ENERGY

LOW CONSUMPTION

Approximately 3% of the gross energy production is required to power the W2H2 equipment. For each Liter of Water fed into the W2H2 system the net output exceeds 1m³ of H₂. H₂ has approximately 3x the Calorific Value of Natural Gas and almost 5x that of Coal.



NO POLLUTION

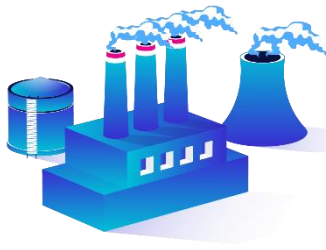
WATER VAPOR IS THE ONLY EMISSION

W2H2 is a no pollution technology designed to shift existing and future industrial power production away from fossil fuels and therefore reduce the world's harmful emissions, currently approx. 25% of the world's harmful emissions is caused by Industrial Power Production, WPP seeks to bring this number close to zero.

Currently approximately 5% of the world's hydrogen production is considered green. **W2H2** is a green method of Hydrogen Production and not dependent in any way on fossil fuel.



CONVERTS ANY SIZE POWER PLANT



GAS/DIESEL



NATURAL GAS



COAL



OIL

WPP RETROFIT

FOSSIL FUEL POWER PLANT CONVERSIONS TO W2H2

MOST FOSSIL FUEL POWER GENERATION CAN BE REPLACED BY ADDING THE W2H2 MAX FUEL SYSTEM

The WPP solution is modular, scalable and customizable to accommodate any size of power generation requirement, up to and including gigawatt fossil fuel power plant conversions into Hydrogen Gas fired plants. When used for Industrial Power Plant Fossil Fuel Conversion to Hydrogen, the technology is deployed in modules with each producing at least 16,000m³ of H₂ gas per hour, with an unlimited number of modules being possible.

Each module is designed to be able to produce enough gas to handle a 100MW requirement



INDUSTRIAL POWER PLANT CONVERSION

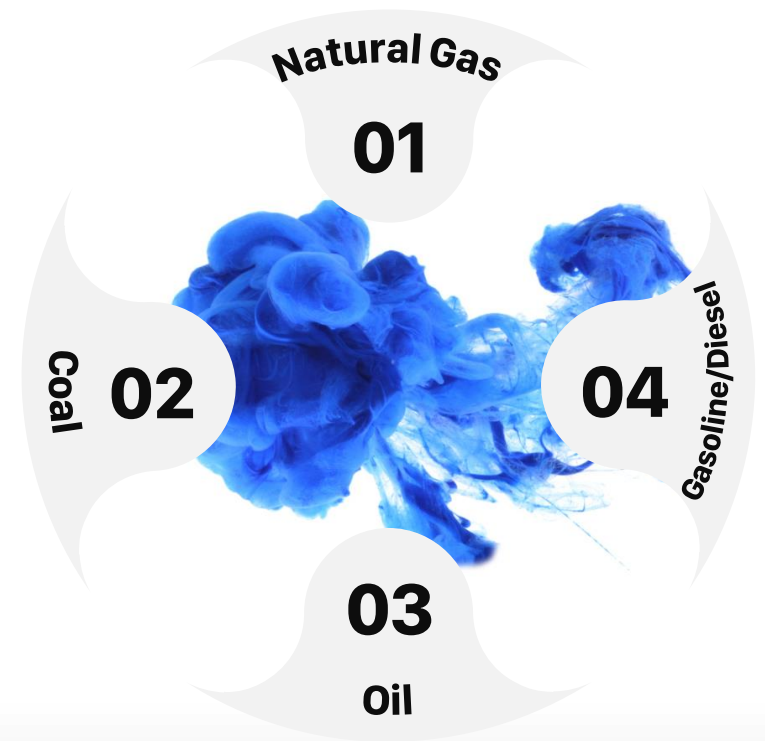
NO FOSSIL FUEL IS NEEDED. RUNS 100% ON WATER!

W
P
P

R
E
T
R
O
F
I
T

Large Power Plant Owners around the world are seeking the **W2H2** technology solution to convert fossil fuel plants to hydrogen gas. After testing and perfecting the technology in smaller scale, a major industrial corporation is set to begin conversion in South America for a 600MW Natural Gas Power Plant owned by one of the world's largest power producers. That same plant owner has plans to adopt the technology in additional facilities globally. We have several global power producers also waiting for the same technology and we expect global mass market adoption at an exponential growth rate.

OVER 20,000 FOSSIL FUEL PLANTS WORLDWIDE REPRESENT THE TARGET MARKET FOR W2H2 CONVERSION TO HYDROGEN GAS



SAVE 75% WITH W2H2

COST OF 600MW NATURAL GAS PLANT

W P P R E T R O F I T

At full Load operating 24/7/365 a 600MW Natural Gas Plant uses almost 100,000m³ of Natural Gas per hour,

AVG cost per m³ estimated at:

$\$0.30 \times 100,000\text{m}^3 \text{ Per Hour} = \$30,000 \text{ USD}$ in fuel costs per hour

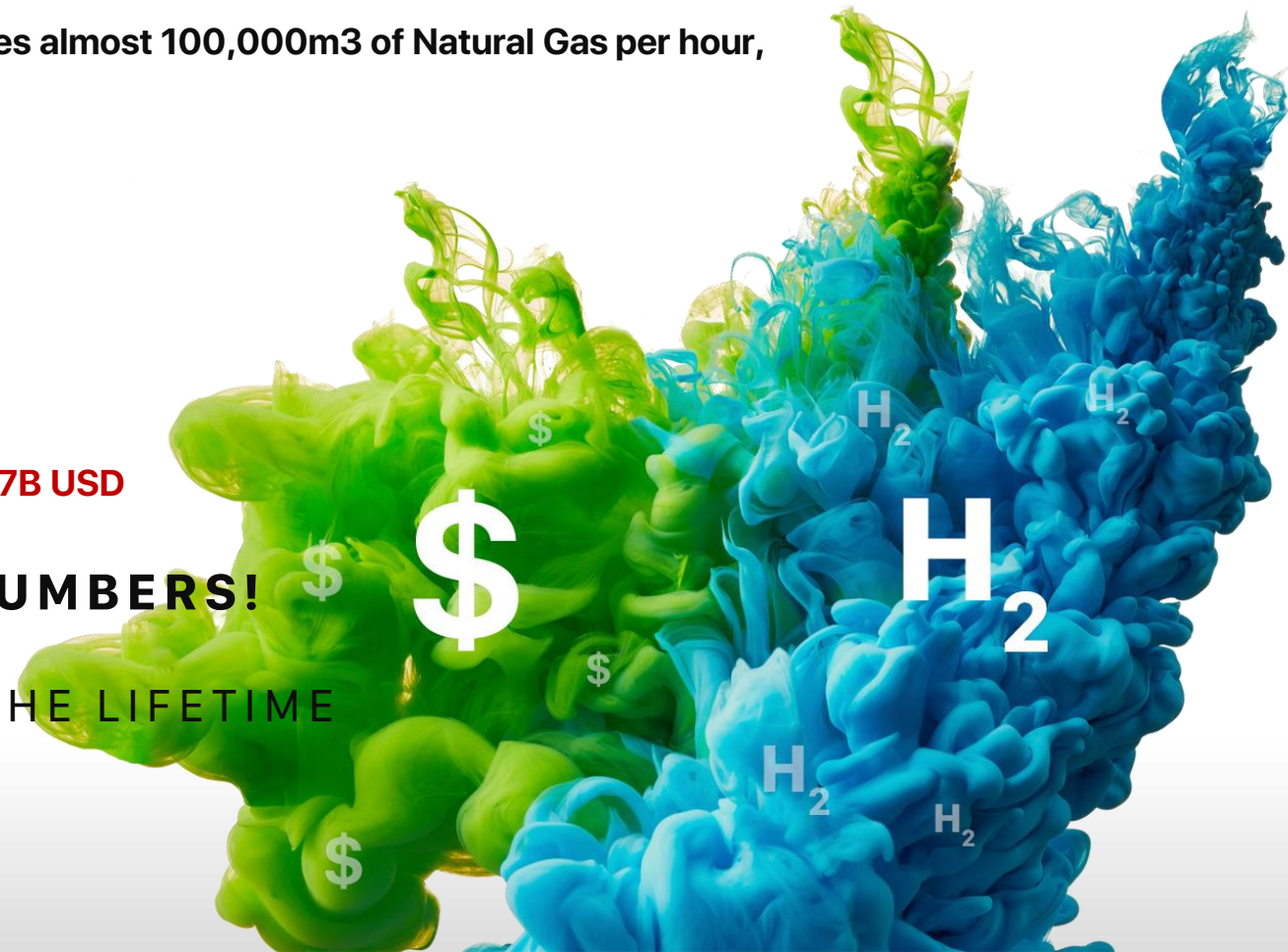
Usage of Natural Gas Per Day = $\$720,000 \text{ USD}$

Usage of Natural Gas Per Year = $\$262.8\text{M USD}$

Usage of Natural Gas during 25 years= TOTAL SPENDING $\$6.57\text{B USD}$

W2H2 SAVES 75% OF THE ABOVE NUMBERS!

HUNDREDS OF MILLIONS SAVED OVER THE LIFETIME
OF THE PLANT



SAVE 75% WITH W2H2

COST OF 100MW NATURAL GAS PLANT

W P P R E T R O F I T

At full Load operating 24/7/365 a 100MW Natural Gas Plant uses approximately 17,000m³ of Natural Gas per hour,

AVG cost per m³ estimated at:

$\$0.30 \times 17,000\text{m}^3 \text{ Per Hour} = \5100 USD in fuel costs per hour

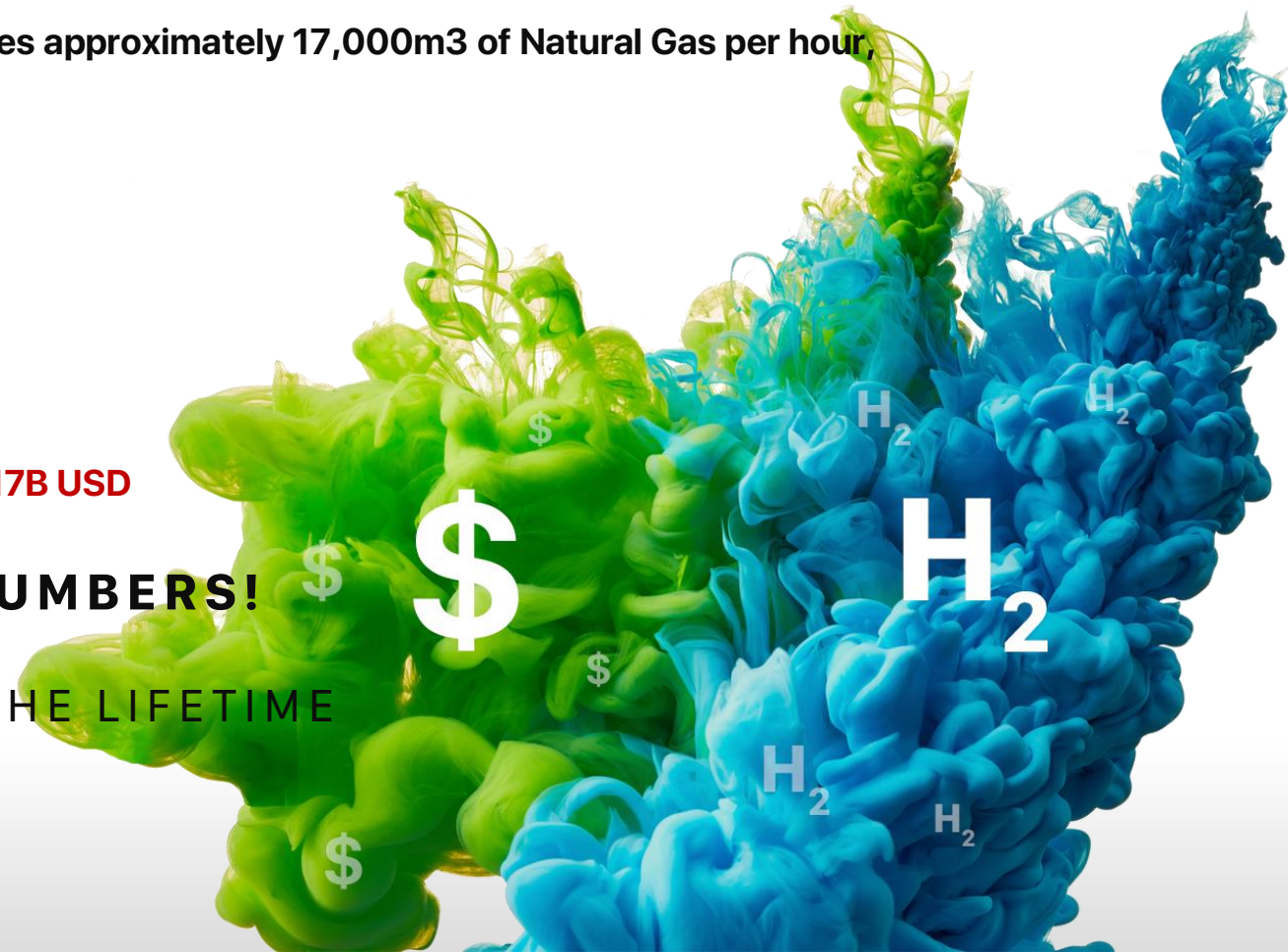
Usage of Natural Gas Per Day = $\$122,400 \text{ USD}$

Usage of Natural Gas Per Year = $\$44.676\text{M USD}$

Usage of Natural Gas during 25 years = TOTAL SPENDING $\$1.117\text{B USD}$

W2H2 SAVES 75% OF THE ABOVE NUMBERS!

HUNDREDS OF MILLIONS SAVED OVER THE LIFETIME
OF THE PLANT



WPP PLANT

TURNKEY MODULAR AND MOBILE POWER PLANTS POWERED BY W2H2

SMALLER PLANTS ARE MOBILE AND DELIVERED IN 20' AND 40' SEA CONTAINERS

SCALABLE TO 100MW+

MOBILE H2 POWER GENERATORS



1MW - 4MW POWER GENERATION

MODULAR H2 POWER PLANTS



10MW - 25MW POWER GENERATION

1MW - 4MW MODULES

10MW TO 25MW SCALABLE TO 100MW+

W
P
P
P
A
L
N
T

Our 1-4MW mobile units are ideally suited for remote installations requiring long intervals between maintenance activities. They can be placed on the back of a truck or on the ground. Optional equipment such as sound attenuated and weather proof enclosures, power distribution panels and packaged heat recovery systems are also available.





MARKETS IN NEED OF MODULAR & MOBILE POWER

W P P P A L N T

- Government & Public Sectors
- Independent Power Producers
- Emergency Power
- Offshore Platforms
- Agricultural
- Food & Beverage
- Industrial Parks
- City Infrastructures
- Mining and Mineral Extraction
- Hospitals
- Universities
- Cement Factories
- Fertilizer Plants
- Oil & Gas
- Pulp and Paper
- Sugar
- Textiles
- Manufacturing
- Waste Treatment
- Landfills
- Military
- Cryptocurrency Miners
- Hotels
- Schools
- Communities
- Shopping Malls
- General Industry
- Humanitarian & Disaster Relief

TOTAL "TURN-KEY" EPC SERVICES

ENGINEERING, PROCUREMENT & CONSTRUCTION

W P P P A L N T

- Design
- Procurement
- Installation
- Infrastructure
- Commissioning
- Training



WPP GENERATOR

CONVERT A DIESEL ENGINE TO HYDROGEN GAS

USE **W2H2** TO CONVERT ANY DIESEL ENGINE TO RUN ON WATER



IDEAL FOR THE SHIPPING INDUSTRY

W P P G E N E R A T O R

WPP GENERATOR can easily cross-over into the Transportation sector, particularly shipping where container ships and cruise ships are among the largest polluters in the world. With a constant supply of water available this is an ideal fit with the addition of a complimentary high volume desalination technology that WPP deploys to convert salt water into fresh water for use in the **W2H2** system.



SAVE 90% WITH W2H2

COST OF 10MW DIESEL GENERATOR

W P P G E N E R A T O R

At full Load operating 24/7/365 a 10MW Power Generator uses about 671 gallons of Diesel per hour,

cost per gallon about \$3.61 USD X 671/Gallon Per Hour = **\$2422.31 USD**

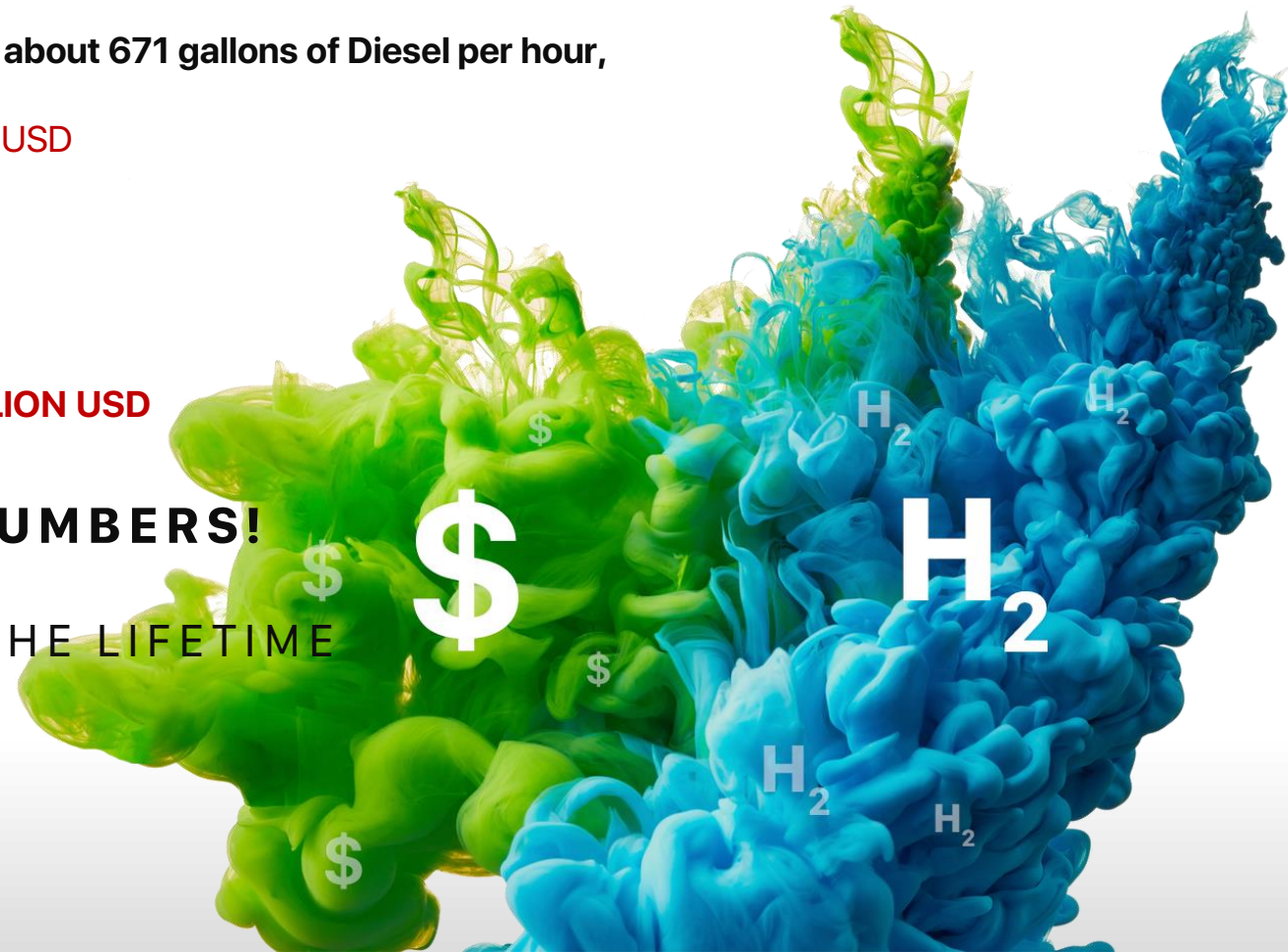
Usage of Diesel Per Day = **\$58,135.44 USD**

Usage of Diesel Per Year = **\$21,219,435.60 USD**

Usage of diesel during 20 years= **TOTAL SPENDING \$424 MILLION USD**

W2H2 SAVES 90% OF THE ABOVE NUMBERS!

HUNDREDS OF MILLIONS SAVED OVER THE LIFETIME



W2H2 BENEFITS SUMMARY

- OPERATES ON AVERAGE AT 25% OF THE COST OF FOSSIL FUEL
- ZERO EMISSIONS
- LOW WATER AND POWER CONSUMPTION
- H2 POSSESSES 3-5x THE CALORIFIC VALUE OF FOSSIL FUEL
- ELIMINATES FOSSIL FUEL STORAGE COSTS
- ELIMINATES FUEL TRANSPORTATION COSTS
- CONVERSION OF FOSSIL FUEL POWER PLANTS TO WATER
- CONVERSION OF POWER GENERATORS TO WATER
- TURNKEY MODULAR AND MOBILE POWER PLANTS
- MINIMAL OR ZERO GRID REQUIREMENT
- DIRECT POWER CONNECTION
- W2H2 IS TRANSFERABLE TO THE SHIPPING AND CRUISE SHIP INDUSTRY





A SCIENTIFIC BREAKTHROUGH.

FOR MORE INFORMATION

Email Address: info@wppenergy.com

Website: www.wppenergy.com

INQUIRIES: +41 917 566 945

